

DS-520AN

High-Speed Wireless USB Device Server With Enterprise Security (802.1X authentication)



Easily Connect and Share USB devices on a Wireless Network

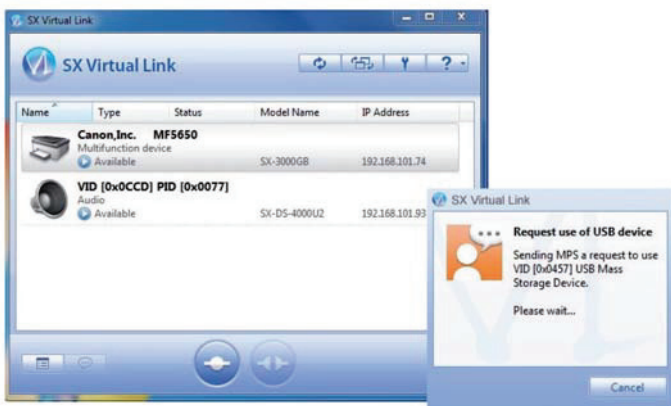
The use of mobile terminals in the office is continually increasing. At the same time, scanners, multifunctional printers, dongles, meters and readers and USB hard disks frequently do not yet have a wireless interface. The DS-520AN Wireless USB Device Server replaces the USB cable with a radio or LAN connection and simultaneously avoids the restrictions of USB cables (max. 5 metres in length). This means that devices can be flexibly connected in any location. Furthermore, USB Device Servers allow devices to be used by several people in sequence via the wireless network, which reduces procurement costs for IT infrastructure and contributes to their full utilisation.

USB Device Server

A USB Device Server is a network adapter that uses Silex USB Virtual Link Technology® to make USB devices network compatible. Practically every USB device type that you can think of can thus be used in and over the network, exactly as if they were directly connected to the computer via a USB cable. Existing software and drivers can continue to be used unchanged.

SX Virtual Link

SX Virtual Link is an app for Silex USB Virtual Link Technology®, which allows the user to manage the virtual connection status.



- Make or break the connection between the computer and the USB devices connected to the device server.
- Send use requests if the device is already occupied by another user.

Functions

1 Enterprise Security

Security for professional use that takes IT security beyond standard encryption and which can be relied on by business users:

- Open
- WEP (64bit/128bit)
- WPA/WPA2-PSK (AUTO)
- WPA2-PSK (AES)
- WPA/WPA2-EAP (AUTO)
- WPA2-EAP (AES)
- IEEE 802.1X (EAP-TLS/EAP-TTLS/PEAP/EAP-FAST/LEAP)

2 Isochronous data-transfer mode

Devices such as industrial USB cameras (full- and high-speed) and audio devices such as loudspeakers that require continuous and almost real-time data transfer can also be used in a wireless network environment.*

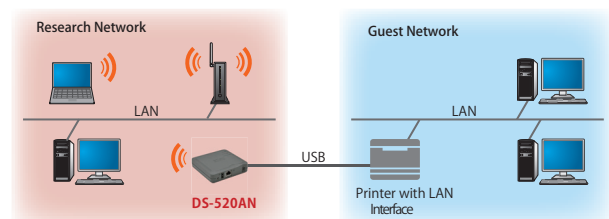
*The use of isochronous USB devices is very complex and not every device can be used in the wireless network. Compatibility validation is urgently recommended.

3 Wireless printserver

The DS-520AN can be used as a wireless print server. The "RAW" and "LPR" network print protocols are supported. Furthermore, printers with fitted LAN cards can have a extra WLAN interface added. This allows the printer be used by several people, even from different network segments.

Example:

Printer can be used from separate network segments (e.g. research / open guest network) thanks to additional interface.



This example shows the use of the DS-520AN as a wireless resource. The DS-520AN can also be used as a second LAN interface (wired). It is not possible to simultaneously use it as a WLAN and LAN print server.

sESS(silex Embedded Software Suite)

The USB Device Server connection functions, as in SX Virtual Link, can also be provided by Silex as SDK client software. In this way, the functions can be integrated in client's own applications. In addition to the Windows SDK, there is also an iOS and an Android SDK available so that the USB device server can also be used from smartphones and tablet computers.

※ The Windows version of the SDK can be downloaded free of charge from Silex' website. For the other versions, please contact the Silex Sales Team.

Other USB Device Server

Basic Model USB 2.0 Device Server



DS-510

- 10BASE-T, 100BASE-TX, 1000BASE-T (auto-detection)
- USB2.0(Type-A) x 2 Port
- Isochronous data-transfer mode

High-End Model USB 3.0 Device Server with Enterprise-Security



DS-600

- 10BASE-T, 100BASE-TX, 1000BASE-T (auto-detection)
- USB 3.0 (Typ-A) x 1 Port, USB 2.0 (Typ-A) x 1 Port
- Isochronous data-transfer mode
- Security: Authentication with IEEE802.1X

USB Device Server comparison

Product name	DS-520AN	DS-510	DS-600
Wired LAN	10BASE-T/100BASE-TX/1000BASE-T		
WLAN	○ (IEEE 802.11 a/b/g/n)	×	×
Device Server feature	USB2.0	USB2.0	USB3.0 / USB2.0
Isochronous data-transfer	○ (Full-Speed / Hi-Speed)		
Autom. printer connect.	○	○	
IEEE 802.1X	○ (EAP-TLS, PEAP, EAP-TTLS, LEAP, PEAP-FAST)	×	○ (EAP-TLS, PEAP, EAP-TTLS)
NAS feature	×	×	○ (FAT12, FAT16, FAT32)
LAN Data encryption	×	×	○ (AES256bit)
USB Password feature	×	×	○
Print Server feature	○	○	○
ECO-Mode feature	○	○	○

* Supply currents of bus power for USB 2.0: 500mA
To operate a USB device that comes with an AC adapter, it is recommended to use the enclosed AC adapter for a stable performance.

Specifications

Product Name	DS-520AN
LAN	
Interface	RJ-45 x 1 Port
Speed	10BASE-T/100BASE-TX/1000BASE-T (auto-detection)
WLAN	
Standards	IEEE 802.11a/b/g/n 2Tx2R
Encryption	Open, WEP(64bit/128bit), WPA2-PSK(AES), WPA/WPA2-PSK (Auto), WPA2-EAP(AES), WPA/WPA2-EAP(Auto), 802.1x (EAP-TLS/EAP-TTLS/PEAP/LEAP/EAP-FAST) ※ WPA-PSK(AES/TKIP), WPA-Enterprise(AES/TKIP), WPA/WPA2-PSK (Auto), WPA/WPA2-EAP(Auto)
Channels	2.4GHz : 1~13ch 5GHz : 36~64ch, 100~140ch
Modul	Integrated 2.4GHz/5GHz WLAN Modul
Smart-Wireless-Setup	Push-Button-Method、PIN-Method
Device Interface	
Buttons	factory default settings, Smart-Wireless-Setup
Device Interface	Hi-Speed (TypA) x 1Port
Software	
Operating Systems Supported	Windows 10 (32/64bit), Windows 8/8.1 (32/64bit), Windows 7 (32/64bit), Windows Server 2012R2, Windows Server 2012, Windows Server 2008R2, Windows Server 2008 (32/64bit), Mac OS X (PowerPC : Ver 10.3.x~Ver 10.5.x, Intel : Ver 10.4.4~Ver 10.10.x)
Protocols Supported	TCP/IP
Configuration	Device Server Setup, Web Browser
Dimensions	W:100mm x D:100mm x H:25.5mm
Weight	118g
Environment	Usage : Temperature : -10~50℃ Humidity : 20~95%RH (non condensing) Storage : Temperature : 0 ~ 40℃ Humidity : 20 ~ 95%RH (non condensing)
Power Supply	5.5W (DC5V 1.1A) without USB power*
Regulatory Compliance	VCCI Class B / FCC Class B / ICES-003 Class B / CE Class B, Rohn
Software	SX Virtual Link (Windows) Ver4.0.1 or higher SX Virtual Link (Macintosh) Ver3.17.0 or higher
Enclosed Accessories	Device, AC Adapter, Setup Guide, GPL-License, Guarantee information
EAN Code	4944406005411
Part Number EU/UK model	E1390

About Silex

Since 2000, silex technology europe GmbH has been a subsidiary of the Japanese company silex technology, Inc. The parent company in Japan has been involved in development and production since 1973. Thus silex technology can look back on nearly 40 years of experience and quality work. In addition to the central company headquarters in Kyoto, there are locations in Tokyo, the USA, China and Europe. Today, the silex group is not only a world market leader in integrated network printing technology, but also a leading supplier of connectivity in the areas of USB, serial and WLAN. Many well-known manufacturers of computer peripherals rely on the technologies of silex technology and use them as OEM suppliers for their own products. Their product line includes print, USB and serial device servers, as well as modular WLAN solutions. In addition to mature technologies and quality products, the company also offers a complete range of services, such as lifetime free support by telephone, email or remote access for all customers.

silex technology is a registered trademark of silex technology, Inc. Other product or brand names may be registered trademarks or trademarks of their respective owners. Technical information and specifications are subject to change without notice. © silex technology, Inc. All rights reserved.

Global marketing and support locations:



Europe
silex technology europe GmbH
+49-2151-65009-10
Toll-free hotline in Germany:
0800-7453938
www.silexeurope.com

Japan
silex technology, Inc.
+81-774-98-3782
www.silex.jp
> support@silex.jp

USA
silex technology america, Inc.
+1-801-747-0656
Kostenfreie Hotline USA:
866-765-8761
www.silexamerica.com
> contact@silexamerica.com

China
silex technology beijing, Inc.
+86-10-8497-1430
www.silex.com.cn
> contact@silex.com.cn



Jebel Ali Free Zone, Dubai (HO)
Street No. N503 - FD03, FD04 & FD05
United Arab Emirates
P.O. Box 17020

Al Olaya Street, Riyadh (BO)
Akariyah-3 Building, Office 610
Kingdom of Saudi Arabia
P.O. Box 301807, Riyadh 11372

QasimZainahStreet,Jeddah(BO)
Al-Rawdah, Al-Rawdah Plaza,
Office 204
Kingdom of Saudi Arabia

Forefront Technologies (BO)
Musheireb - Palestine St.,
Doha - Qatar

Forefront Technologies (BO)
Khuwair,
Muscat, Oman

www.forefrontec.com
info@forefrontec.com

Tel: +971 (4) 881 44 40
Fax: +971 (4) 881 42 42

Tel: +966 (11) 460 35 80
Fax: +966 (11) 460 35 85

Tel: +966 (12) 612 14 63
Fax: +966 (12) 612 05 17

Tel: +974 (3) 394 47 59
Fax: +971 (4) 881 42 42

Tel: +968 (9) 774 24 70
Fax: +971 (4) 881 42 42