

DS-520AN

802.11n Wireless & Gigabit Ethernet USB Device Server Including 802.1X Enterprise Security



Easily & Securely Connect and Share Virtually any USB Device on Enterprise Networks

Office equipment such as USB scanners, multi-function printers (MFPs), dongles, hard disk drives, and cameras etc. frequently lack a wireless interface thus making them unavailable to connected devices such as computers, tablets, and smartphones. The DS-520AN Wireless USB Device Server replaces the USB cable with an enterprise-secure wireless or wired LAN connection.

By using the DS-520AN, users can overcome the restriction in the maximum length (5m) of USB cables because the USB device can be accessed from any location remotely over the network. This provides increased flexibility and ease of use.

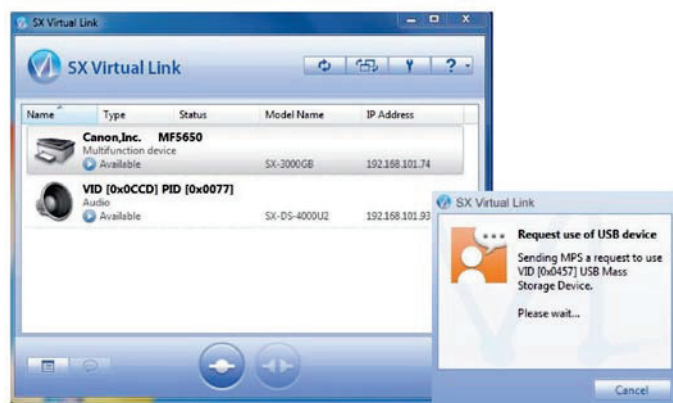
IT infrastructure procurement costs can be reduced by sharing USB devices such as office printers across multiple users in a networked environment using a DS-520AN. Multiple users can access the same USB device sequentially which is managed by Silex SX Virtual Link Software.

What is a USB Device Server?

A USB Device Server such as the DS-520AN is a network adapter that uses Silex USB Virtual Link Technology® to make USB devices "network-compatible". Virtually any USB device that users can think of can thus be used over a network in exactly the same way as if it were physically connected via a USB cable. Existing drivers and applications can continue to be used without requiring any changes.

SX Virtual Link

SX Virtual Link (SVL) is application software for the Silex USB Virtual Link (UVL) Technology®. Any networked USB devices connected to a USB Device Server can be remotely managed through SVL.



- You can remotely operate USB devices (connect, disconnect, etc.)
- You can send a disconnect request when the shared USB device is in use.

Functions

1 Enterprise Security

Security for professional use that takes IT security beyond standard encryption and which can be relied on by business users:

- Encryption: AES
- IEEE 802.1X:
 - EAP-TLS
 - EAP-TTLS
 - PEAP
 - EAP-FAST
 - LEAP

2 Isochronous data-transfer mode

Devices such as industrial USB cameras (full- and high-speed) and audio devices such as loudspeakers that require continuous and almost real-time data transfer can also be used in a wireless network environment.*

*The use of isochronous USB devices is very complex and not every device can be used in the wireless network. Compatibility validation is strongly recommended.

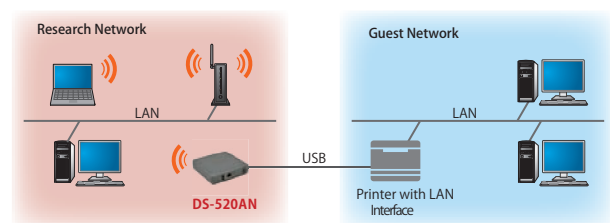
3 Wireless print server

The DS-520AN can be used as a wireless print server. The "RAW" and "LPR" network print protocols are supported.

Furthermore, printers with fitted LAN cards can have an extra WLAN interface added. This allows the printer to be used by several people, even from different network segments.

Example:

Printer can be used from separate network segments (e.g. research / open guest network) thanks to additional interface.



This example shows the use of the DS-520AN as a wireless resource. The DS-520AN can also be used as a second LAN interface (wired). It is not possible to simultaneously use it as a WLAN and LAN print server.

sESS(silex Embedded Software Suite)

The USB Device Server connection functions, as in SX Virtual Link, can also be provided by Silex as SDK client software. In this way, the functions can be integrated in client's own applications. In addition to the Windows SDK, there is also an iOS and an Android SDK available so that the USB device server can also be used from smartphones and tablet computers.

※ The Windows version of the SDK can be downloaded free of charge from Silex' website. For the other versions, please contact the Silex Sales Team.

Other USB Device Server

Basic Model USB 2.0 Device Server

DS-510

- 10BASE-T, 100BASE-TX, 1000BASE-T (auto-detection)
- USB2.0(Type-A) x 2 Port
- Isochronous data-transfer mode



High-End Model USB 3.0 Device Server with Enterprise-Security

DS-600

- 10BASE-T, 100BASE-TX, 1000BASE-T (auto-detection)
- USB 3.0 (Typ-A) x 1 Port, USB 2.0 (Typ-A) x 1 Port
- Isochronous data-transfer mode
- Security: Authentication with IEEE802.1X



USB Device Server comparison

| Product name | DS-520AN | DS-510 | DS-600 |
|---------------------------|--|--------|-----------------------------|
| Wired LAN | 10BASE-T/100BASE-TX/1000BASE-T | | |
| WLAN | ○ (IEEE 802.11 a/b/g/n) | × | × |
| Device Server feature | USB2.0 | USB2.0 | USB3.0 / USB2.0 |
| Isochronous Data Transfer | ○ (Full-Speed / Hi-Speed) | | |
| Automatic Printer Connect | ○ | ○ | ○ |
| IEEE 802.1X | ○ (EAP-TLS, PEAP, EAP-TTLS, LEAP/EAP-FAST) | × | ○ (EAP-TLS, PEAP, EAP-TTLS) |
| NAS feature | × | × | ○ (FAT12, FAT16, FAT32) |
| LAN Data encryption | × | × | ○ (AES256bit) |
| USB Password feature | × | × | ○ |
| Print Server Feature | ○ | ○ | ○ |
| ECO-Mode feature | ○ | ○ | ○ |

Specifications

| | |
|-----------------------------|--|
| Product Name | DS-520AN |
| LAN | |
| Interface | RJ-45 x 1 Port |
| Speed | 10BASE-T/100BASE-TX/1000BASE-T(auto-detection) |
| WLAN | |
| Standards | IEEE 802.11a/b/g/n 2Tx2R |
| Encryption | Open, WEP (64-bit/128-bit) TKIP AES 802.1X(EAP-TLS/EAP-TTLS/PEAP/LEAP/EAP-FAST) |
| Channels | 2.4GHz : Ch 1 ~ 11 5GHz : Ch 36 ~ 64 and Ch 100 ~ 140 |
| Module | Integrated 2.4GHz/5GHz WLAN Module |
| Smart-Wireless-Setup | Push-Button Method, PIN Method |
| Device Interface | |
| Buttons | Factory Default Settings, Smart-Wireless Setup |
| Device Interface | High-Speed Type A x 1 USB Port |
| Software | |
| Operating Systems Supported | Windows 10 (32/64-bit), Windows 8/8.1 (32/64-bit) Windows 7 (32/64-bit), Windows Server 2019, Windows Server 2016, Windows Server 2012R2, Windows Server 2012, Windows Server 2008R2, Windows Server 2008, Mac OS X (PowerPC: Ver10.3.x to Ver10.5.x, Intel: Ver10.4.4 to Ver10.14.x) |
| Protocols Supported | TCP/IP |
| Configuration | Device Server Setup, Web Browser |
| Dimensions | 100 mm x 100 mm x 25.5 mm |
| Weight | 118 g |
| Environment | Operating: Temperature: -10 ~ 50 Degrees C Humidity: 20 ~ 95 %RH (non-condensing) Storage: Temperature: -10 ~ 40 Degrees C Humidity: 20 ~ 95 %RH (non-condensing) |
| Power Supply | 5.5W (DC 5V, 1.1A) Without USB Power * |
| Regulatory Compliance | VCCI Class B / FCC Class B / ICES-003 Class B / CE Class B / RoHS |
| Software | SX Virtual Link (Windows) Version 4.0.1 or Higher SX Virtual Link (Mac) Version 3.17.0 or Higher |
| Enclosed Accessories | Device, AC Adapter, Setup Guide, GPL-License, Guarantee Information |
| EAN Code | 4944406005411 |
| Part Number US Model | DS-520AN-US |

* Supply currents of bus power for USB 2.0: 500mA

To operate a USB device that comes with an AC adapter, it is recommended to use the enclosed A C adapter for best performance.

silex technology is a registered trademark of silex technology, Inc. Other product or brand names may be registered trademarks or trademarks of their respective owners. Technical information and specifications are subject to change without notice. © 2017 silex technology, Inc. All rights reserved.

Global marketing and support locations:



Jebel Ali Free Zone, Dubai (HO)
Street No. N503 - FD03, FD04
United Arab Emirates
P.O. Box 17020

Al Olaya Street, Riyadh (BO)
Akariyah-3 Building, Office 610
Kingdom of Saudi Arabia
P.O. Box 301807, Riyadh 11372

QasimZainahStreet, Jeddah(BO)
Al-Rawdah, Al-Rawdah Plaza,
Office 204
Kingdom of Saudi Arabia

Forefront Technologies (BO)
Musheireb - Palestine St.,
Doha - Qatar

Forefront Technologies (BO)
Khuwair,
Muscat, Oman

www.forefrontec.com
info@forefrontec.com

Tel: +971 (4) 881 44 40
Fax: +971 (4) 881 42 42

Tel: +966 (11) 460 35 80
Fax: +966 (11) 460 35 85

Tel: +966 (12) 612 14 63
Fax: +966 (12) 612 05 17

Tel: +974 (3) 394 47 59
Fax: +971 (4) 881 42 42

Tel: +968 (9) 774 24 70
Fax: +971 (4) 881 42 42

PN: 141-20143-100

REV B. 20192803